

# Public Notice – Segment 3

Rocky Mountain Goat

## PUBLIC NOTICE

Office national  
de l'énergie



National Energy  
Board

### Trans Mountain Pipeline ULC, as General Partner of Trans Mountain Pipeline L.P. Trans Mountain Expansion Project Notice of Proposed Detailed Route Pursuant to Paragraph 34(1)(b) of the *National Energy Board Act*

**IN THE MATTER OF** the *National Energy Board Act* and the Regulations made thereunder.

**AND IN THE MATTER OF** Certificate of Public Convenience and Necessity OC-065 approving the general route of the Trans Mountain Expansion Project.

**AND IN THE MATTER OF** an application by Trans Mountain Pipeline ULC, on behalf of Trans Mountain Pipeline L.P., ("Trans Mountain"), respecting the determination and approval of the detailed route for the construction of the Trans Mountain Expansion Project, approximately 1179.9 kilometres in length, commencing at Trans Mountain's Terminal located in Sherwood Park, Alberta to Westridge Marine Terminal located in Burnaby, British Columbia as shown on the adjacent Route Map.

If you anticipate that your lands may be adversely affected by the proposed detailed route of the Trans Mountain Expansion Project, you may oppose the proposed detailed route by filing a written statement of opposition with the National Energy Board (Board) within thirty (30) days of the publication of this notice. The written statement of opposition must set out the nature of your interest in the proposed detailed route and the grounds for your opposition to that route. In light of the previous detailed route processes that were conducted for the Trans Mountain Expansion Project in 2017 and 2018, the Board will only accept statements of opposition that raise concerns regarding a material change in circumstances from the original detailed route processes. A copy of any written statement of opposition to this detailed route must be sent to the following addresses:

**National Energy Board**  
Suite 210, 517 Tenth Avenue SW  
Calgary, Alberta T2R 0A8  
Attention: Sheri Young, Secretary of the Board  
Phone: 403-292-4800  
Toll Free Fax: 1-877-288-8803  
Email: [TMX.ProcessHelp@neb-one.gc.ca](mailto:TMX.ProcessHelp@neb-one.gc.ca)  
Website: [www.neb-one.gc.ca](http://www.neb-one.gc.ca)

And to:  
**Trans Mountain Expansion Project**  
Suite 2700, 300 5th Ave SW,  
Calgary Alberta T2P 5J2,  
Attention: Alain Parisé, Director, Land  
Fax: 403-514-6401  
Email: [TMEP\\_Land@transmountain.com](mailto:TMEP_Land@transmountain.com)

The process for considering statements of opposition will be as follows:

- Previous detailed route decisions, including conditions imposed by the Board, will stand if no statement of opposition is filed in relation to them within thirty (30) days following the publication of this notice. Accordingly, no action on the part of a landowner is required to ensure that Trans Mountain continues to be bound by the conditions in the original detailed route decisions.
- If a written statement of opposition is filed with the Board within thirty (30) days following the publication of this notice, the statement relates to a previous detailed route decision, and the statement raises concerns regarding a material change in circumstances from the original detailed route process, the Board will conduct a review of the previous detailed route decision.
- For detailed route hearings that were in progress on August 30, 2018 and no decision was issued, landowners and Indigenous communities need to register their continued objection by filing a statement of opposition within thirty (30) days following the publication of this notice. The Board will then continue the hearing and may add new process steps, as necessary, to address any valid concerns with respect to changed circumstances.
- Landowners and Indigenous communities that did not file a statement of opposition in the previous detailed route process, whose statement of opposition was rejected or that withdrew their statement of opposition prior to a detailed route hearing, may file a new statement of opposition within thirty (30) days following the publication of this notice. If the statement of opposition raises a material change in circumstances, the Board will hold a hearing to consider those concerns, in relation to any section or part of the pipeline affected by the concerns disclosed in the written statement.

The Board is not required to give any notice, hold any hearing or take any other action with respect to any written statement of opposition filed with the Board and may at any time disregard any such written statement if the person who filed the statement files a notice of withdrawal, or if it appears to the Board that the statement is frivolous, vexatious or is not made in good faith. If the Board determines it appropriate to hold a public hearing, the Board will fix a suitable time and place for the hearing and will publish a notice of the hearing in at least one issue of a publication in general circulation within the area in which the lands acquired or proposed to be acquired are situated. The Board will also send a notice of the public hearing to each person who has filed a written statement of opposition with the Board.

The public hearing will be conducted within the area in which the lands to which the statement relates are situated. The Board, or a person authorized by the Board, may make such inspection of the lands acquired or proposed to be acquired, or affected by, construction of the Trans Mountain Expansion Project, as deemed necessary by the Board.

If the Board determines a public hearing is required, the Board will permit each person who filed a written statement of opposition that met the requirements to make representations and may allow any other interested person to make representations before it as the Board deems proper. The Board will take into account all written statements of opposition and all representations made at the public hearing in determining the best possible route of the pipeline, and the most appropriate methods and timing of construction for the Trans Mountain Expansion. The Board may impose in any approval, such terms and conditions as it considers proper. Where the Board has held a public hearing in respect of any section or part of the Trans Mountain Expansion Project, and has approved or refused to approve the plan, profile and book of reference respecting that section or part, it will forward a copy of its decision and reasons to the Minister and each person who made representations to the Board at the public hearing.

The Board may fix such amount as it deems reasonable in respect of the actual costs reasonably incurred by any person who makes representations to the Board at such a public hearing, and the amount so fixed will be paid forthwith to the person by Trans Mountain.

Copies of the plan, profile and book of reference for the detailed route of the Trans Mountain Expansion Project may be obtained by calling 1-866-514-6700 or emailing [info@transmountain.com](mailto:info@transmountain.com). You may also view it online at <https://www.transmountain.com/detailed-route> or in person at:

**National Energy Board Library**  
2nd Floor, 517 Tenth Avenue SW  
Calgary, Alberta T2R 0A8  
Toll Free Telephone: 1-800-899-1265

Information and templates, including a Statement of Opposition form, are also available at [www.neb-one.gc.ca/TransMountainExpansion](http://www.neb-one.gc.ca/TransMountainExpansion).

A copy of any such written statement of opposition to this detailed route must be sent to the following addresses:

**National Energy Board**  
Suite 210, 517 Tenth Avenue SW  
Calgary, Alberta T2R 0A8  
Attention: Sheri Young, Secretary of the Board  
Toll Free Fax: 1-877-288-8803  
Email: [TMX.ProcessHelp@neb-one.gc.ca](mailto:TMX.ProcessHelp@neb-one.gc.ca)  
Website: [www.neb-one.gc.ca](http://www.neb-one.gc.ca)

And to:

**Trans Mountain Expansion Project**  
Suite 2700, 300 5th Ave SW  
Calgary Alberta T2P 5J2  
Attention: Alain Parisé, Director, Land  
Fax: 403-514-6401  
Email: [TMEP\\_Land@transmountain.com](mailto:TMEP_Land@transmountain.com)

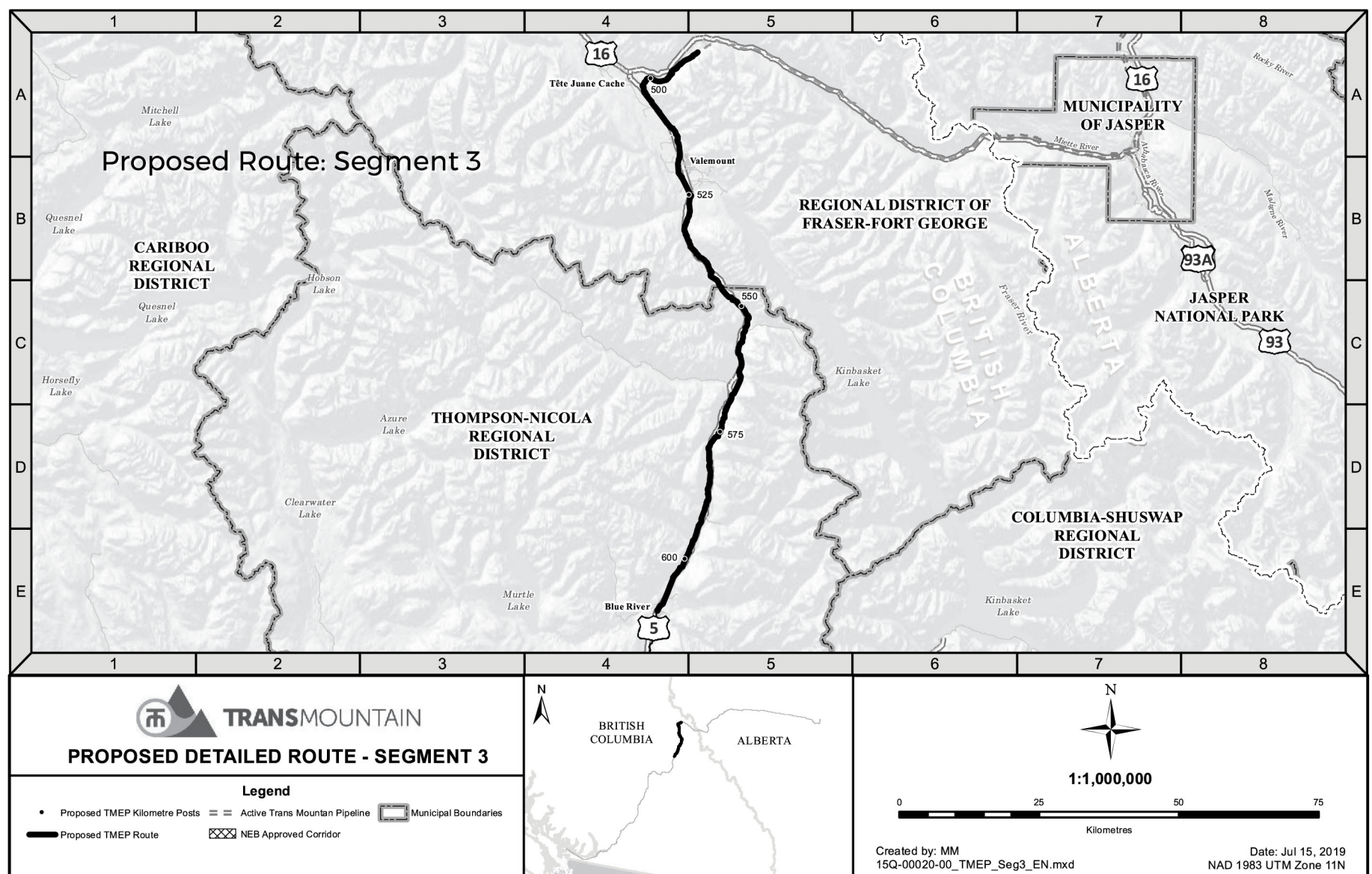
The Board's Alternative Dispute Resolution (ADR) process will be available and communicated by the Board when it is determined a public hearing will be held for your statement of opposition. An ADR process could take the form of a meeting between you and Trans Mountain, which may be facilitated by trained Board staff or by another neutral third party. The facilitator would assist you and Trans Mountain to develop a process that may help to resolve outstanding issues.

For more information or for any questions, you can contact a National Energy Board Process Advisor at 1-800-899-1265 or [TMX.ProcessHelp@neb-one.gc.ca](mailto:TMX.ProcessHelp@neb-one.gc.ca).

Should you have any questions concerning this notice, the proposed detailed route, or the Board's detailed route procedures, please contact Trans Mountain at 1-866-454-4717 or [info@transmountain.com](mailto:info@transmountain.com) and a Trans Mountain representative will return your call.



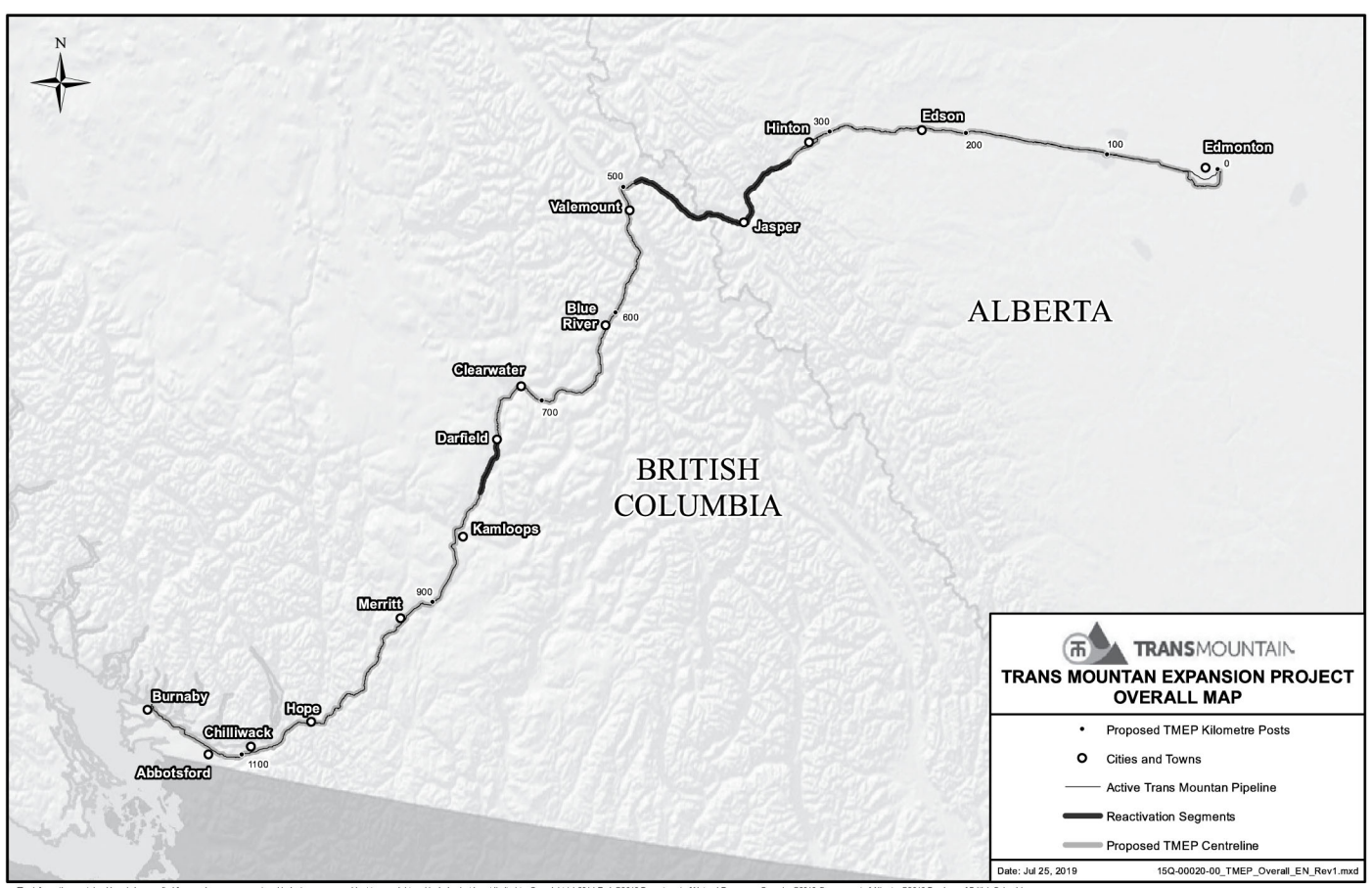
# PUBLIC NOTICE



The information contained herein is compiled from various government and industry sources, subject to copyright and includes but is not limited to: Copyright© 2014 Esri; ©2019 Department of Natural Resources Canada; ©2019 Government of Alberta; ©2019 Province of British Columbia.

## Property Identification

|             |              |             |             |             |             |              |             |             |             |             |              |             |
|-------------|--------------|-------------|-------------|-------------|-------------|--------------|-------------|-------------|-------------|-------------|--------------|-------------|
| PIN 5692200 | 016-353-391  | 015-947-491 | UCL 11      | UCL 15      | PIN 3737640 | 013-631-365  | 013-631-608 | UCL 32      | PIN 3497820 | 013-113-933 | 013-114-409  | PIN 3212941 |
| PIN 5195101 | 026-916-746  | 015-947-513 | 016-910-010 | 015-154-459 | 013-631-276 | PIN 10117531 | 013-631-632 | 004-106-717 | 013-065-483 | PIN 3485920 | PIN 36700381 | 013-155-342 |
| 016-625-862 | 016-476-158  | 015-947-653 | 016-910-176 | 009-758-402 | 013-631-292 | 013-132-164  | PIN 3856950 | PIN 3487160 | 013-112-244 | PIN 3485760 | PIN 3214761  | 008-098-565 |
| PIN 5502160 | 016-476-166  | 015-947-661 | UCL 12      | UCL 16      | 013-631-322 | UCL 24       | 013-630-016 | PIN 3487030 | 013-065-513 | 013-114-131 | 013-226-711  | PIN 3251020 |
| PIN 5195231 | 015-257-380  | PIN 5764900 | 016-293-053 | UCL 17      | PIN 3737770 | 013-631-373  | UCL 30      | UCL 33-1    | 013-065-491 | 013-114-352 | 011-358-793  | PIN 2534931 |
| UCL 1       | 015-061-639  | PIN 5524021 | UCL 13      | 015-281-884 | UCL 116     | PIN 3738000  | 013-631-659 | 027-558-711 | UCL 34      | PIN 3713420 | 013-195-077  | 013-155-407 |
| 017-027-870 | 016-475-402  | 009-068-848 | 016-910-184 | UCL 18      | UCL 21      | 013-631-381  | 013-631-667 | UCL 33      | 013-184-202 | 013-114-158 | 013-194-992  | PIN 2534801 |
| 013-520-695 | 008-765-685  | 006-844-782 | UCL 14      | 004-664-396 | 013-631-349 | PIN 3856820  | PIN 3857280 | 017-448-522 | 013-184-181 | UCL 36      | 013-114-280  | 025-165-917 |
| 017-027-977 | 015-316-858  | 015-394-425 | 016-449-983 | 013-631-217 | 016-048-423 | 013-629-883  | 013-226-916 | 013-065-467 | 013-112-309 | 013-114-221 | 013-114-344  | 024-358-282 |
| UCL 3       | 016-475-721  | 028-027-302 | 027-637-727 | PIN 3737480 | UCL 22      | UCL 27       | PIN 3738260 | 013-065-335 | PIN 3486380 | PIN 3485630 | 013-226-746  | 016-878-396 |
| 010-999-035 | 011-598-221  | 015-427-650 | 009-460-063 | 013-631-225 | 006-467-083 | 013-631-578  | PIN 3487900 | 013-065-459 | 013-112-767 | PIN 3485500 | PIN 3875590  | 016-878-400 |
| UCL 4       | PIN 35480041 | PIN 5524281 | 009-460-101 | PIN 3737510 | PIN 3856660 | PIN 3738130  | PIN 3487870 | 013-184-377 | PIN 3486250 | 013-114-247 | 013-155-393  | 016-878-370 |
| 027-349-934 | 015-148-408  | UCL 7       | 008-060-398 | 013-226-908 | 016-048-415 | UCL 29       | UCL 31      | PIN 3497950 | 013-113-852 | 013-114-395 | PIN 3212811  |             |
| PIN 5019770 | PIN 15981021 | 015-427-838 | 015-394-450 | 013-631-233 | 013-631-357 | PIN 3857020  | PIN 3487580 | 013-065-441 | PIN 3497530 | 013-114-271 | PIN 3213271  |             |
| 015-167-569 | 023-250-950  | 004-384-067 |             |             |             |              |             |             |             |             |              |             |
| 010-998-420 | 023-250-968  | 007-748-060 |             |             |             |              |             |             |             |             |              |             |
| 015-182-843 | 023-250-976  | 006-322-786 |             |             |             |              |             |             |             |             |              |             |
| 017-028-043 | 023-250-984  | 007-748-132 |             |             |             |              |             |             |             |             |              |             |
| 017-028-027 | 023-250-992  | 015-427-943 |             |             |             |              |             |             |             |             |              |             |
| PIN 5019640 | 004-176-600  | PIN 4565701 |             |             |             |              |             |             |             |             |              |             |
| 008-609-217 | 027-243-532  | PIN 4565411 |             |             |             |              |             |             |             |             |              |             |
| PIN 5503230 | 027-243-567  | 015-428-052 |             |             |             |              |             |             |             |             |              |             |
| UCL 5       | PIN 5505500  | PIN 4565251 |             |             |             |              |             |             |             |             |              |             |
| 027-391-787 | 025-752-553  | PIN 4565381 |             |             |             |              |             |             |             |             |              |             |
| 027-391-795 | 025-752-626  | 015-428-150 |             |             |             |              |             |             |             |             |              |             |
| 026-272-067 | 025-752-618  | 015-428-087 |             |             |             |              |             |             |             |             |              |             |
| 008-608-903 | 025-752-600  | 015-428-320 |             |             |             |              |             |             |             |             |              |             |
| 008-608-920 | 025-752-677  | 015-167-615 |             |             |             |              |             |             |             |             |              |             |
| 016-293-029 | 025-752-731  | 015-167-607 |             |             |             |              |             |             |             |             |              |             |
| 008-609-357 | 028-060-059  | 015-167-631 |             |             |             |              |             |             |             |             |              |             |
| 008-609-331 | PIN 5528940  | PIN 5766430 |             |             |             |              |             |             |             |             |              |             |
| 008-609-381 | 015-366-707  | 028-345-037 |             |             |             |              |             |             |             |             |              |             |
| 014-968-983 | 015-338-061  | UCL 9       |             |             |             |              |             |             |             |             |              |             |
| 024-297-194 | 015-200-680  | 015-167-623 |             |             |             |              |             |             |             |             |              |             |
| 014-968-771 | 015-253-155  | PIN 5506670 |             |             |             |              |             |             |             |             |              |             |
| PIN 5382140 | PIN 19471341 | UCL 10      |             |             |             |              |             |             |             |             |              |             |
| 028-500-784 | 015-947-505  | PIN 5766560 |             |             |             |              |             |             |             |             |              |             |



The information contained herein is compiled from various government and industry sources, subject to copyright and includes but is not limited to: Copyright© 2014 Esri; ©2019 Department of Natural Resources Canada; ©2019 Government of Alberta; ©2019 Province of British Columbia.